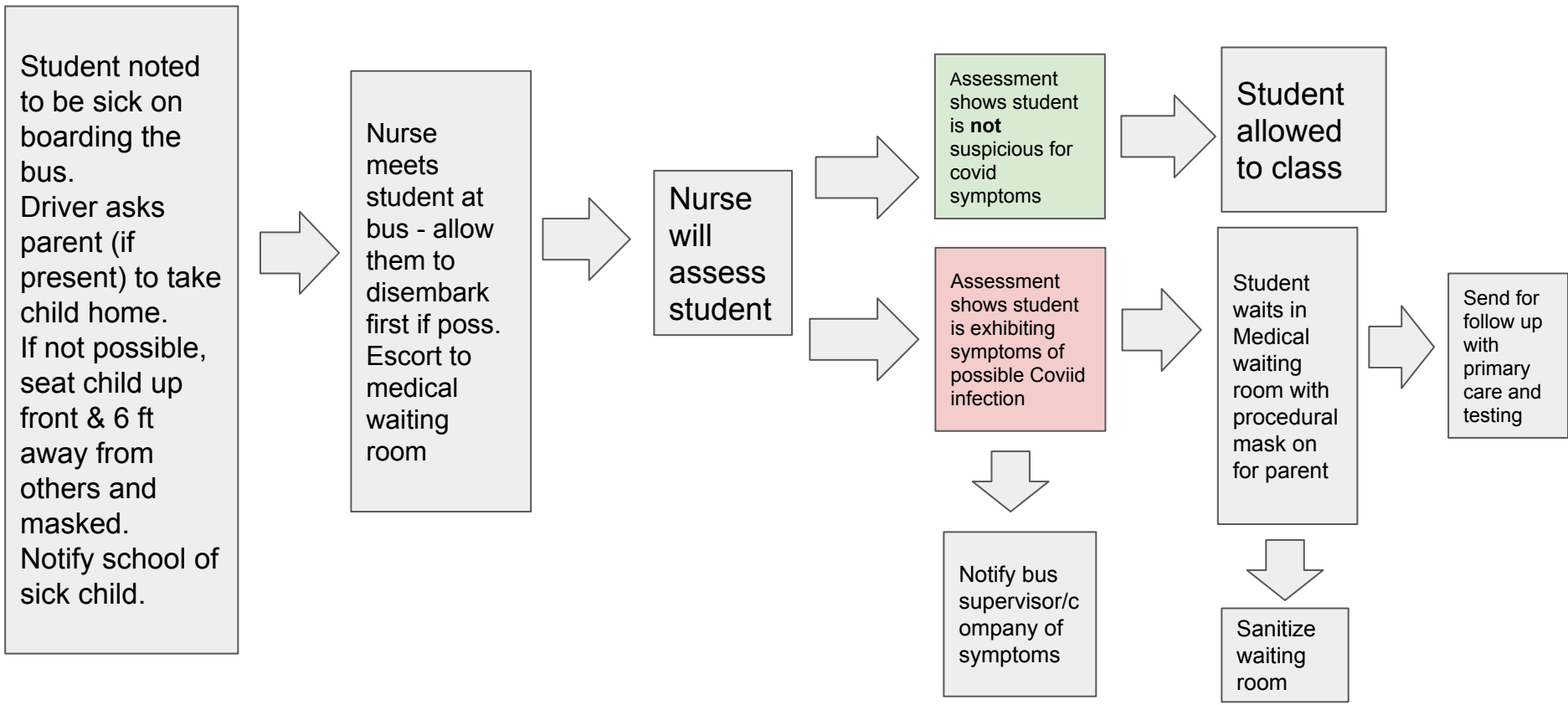


Symptomatic on the Bus

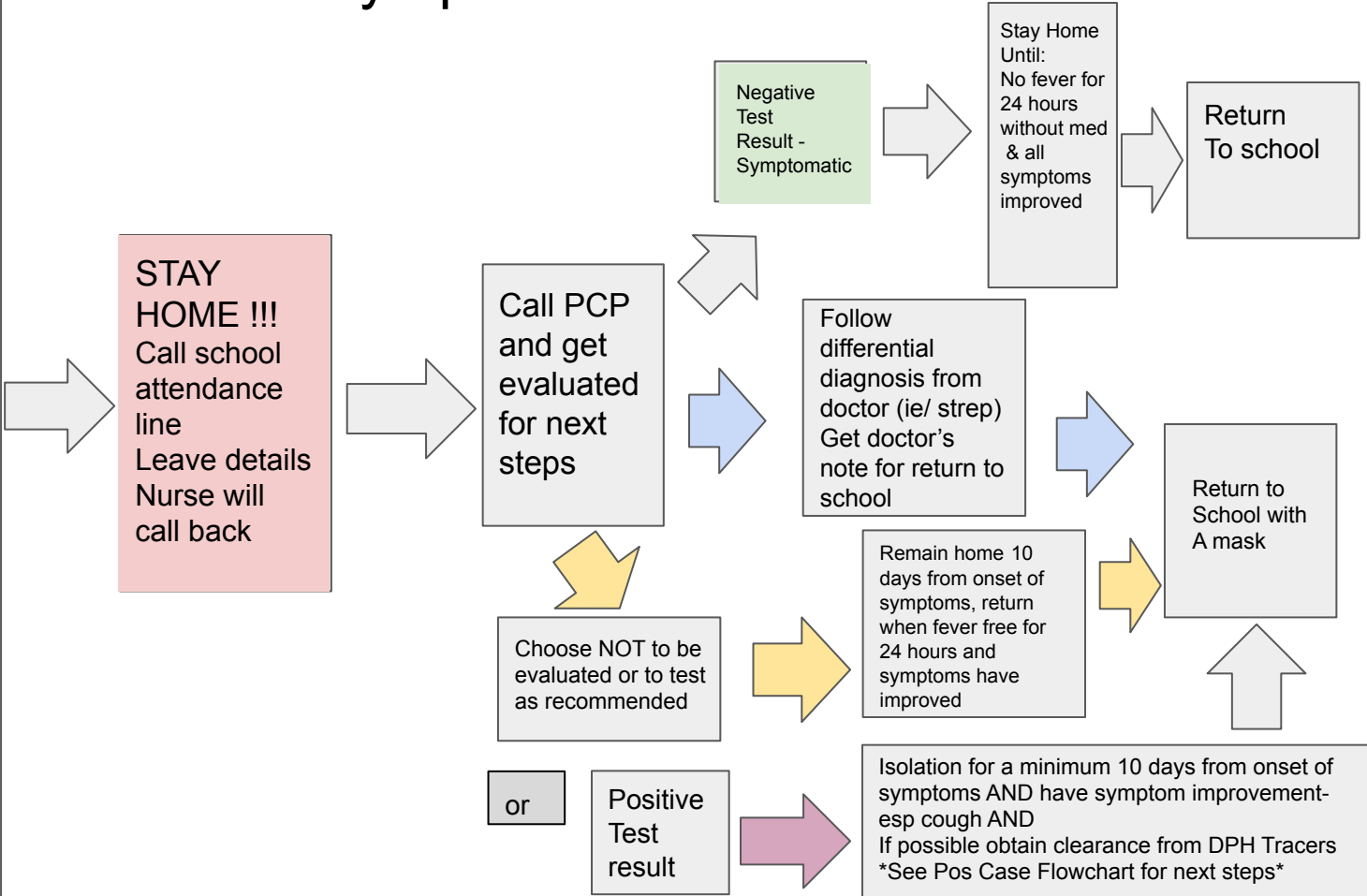


Symptomatic at Home

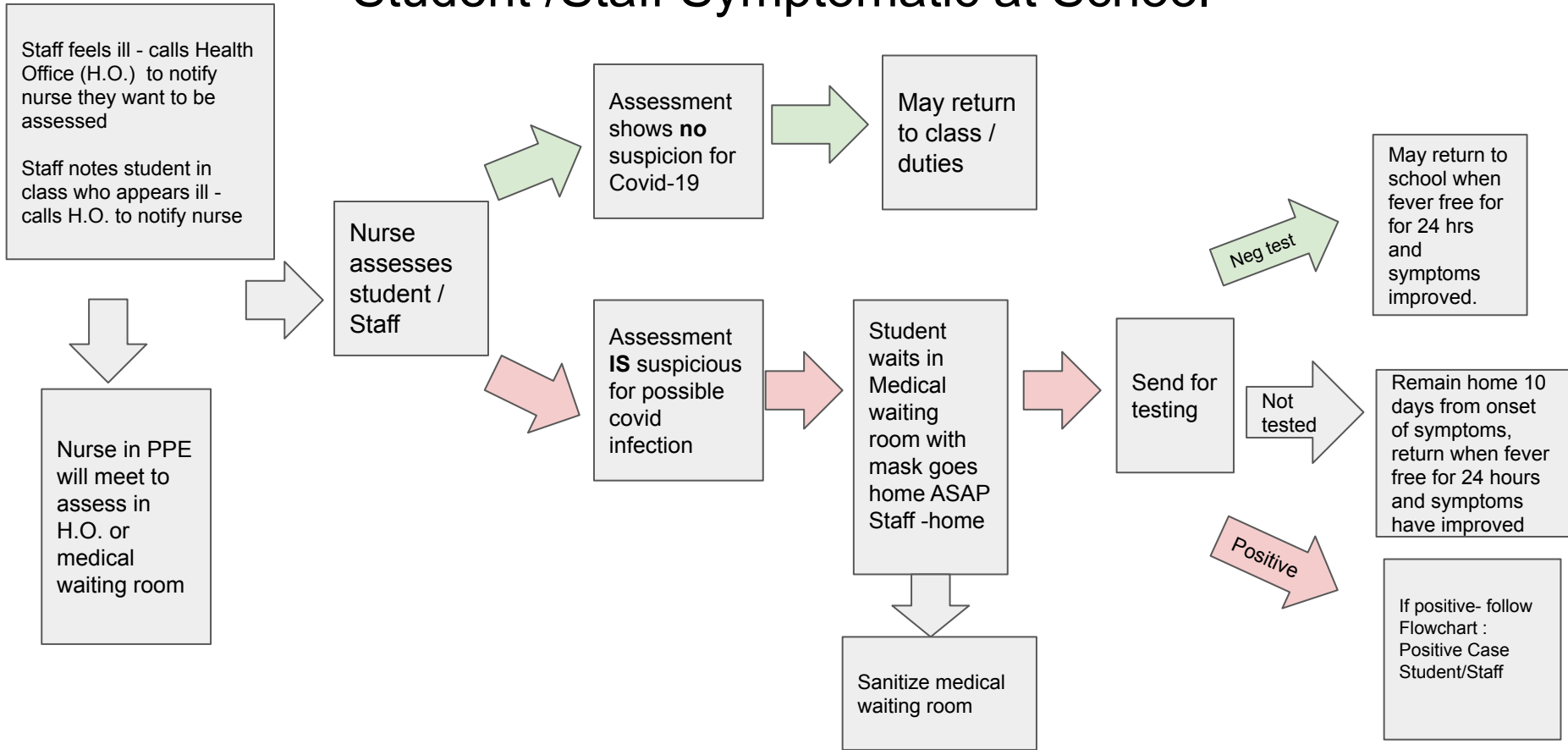
Displays any of the following symptoms:

- Fever (100.0 degrees F. or higher), chills, or shaking chills
- Cough (not due to other known causes such as asthma)
- Difficulty breathing or shortness of breath
- New loss of taste or smell
- Sore throat
- Headache *when in combination with other symptoms and not due to a chronic condition*
- Muscle aches or body aches
- Nausea, vomiting, or diarrhea
- Fatigue, when in combination with other symptoms
- Nasal congestion or runny nose (not due to other known causes, such as allergies) *when in combination with other symptoms*

Symptomatic at Home



Student /Staff Symptomatic at School



Positive Case Student or Staff

